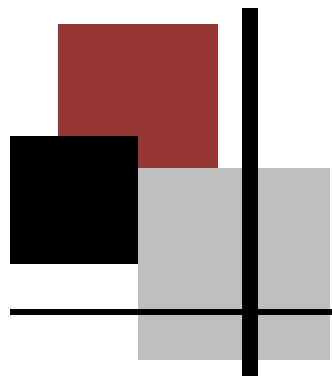


Greater Beckley Christian School

Our mission is to provide quality education in the light of God's Word to families in the greater Beckley area. We offer an alternative to secular education that is biblically based, morally grounded and academically challenging. Our goal is to develop the whole student; spiritually, mentally, academically and physically. All of our programs are designed to meet these objectives.



Educational Model

PHILOSOPHY

A biblically integrated comprehensive college-prep curriculum

PERSONNEL

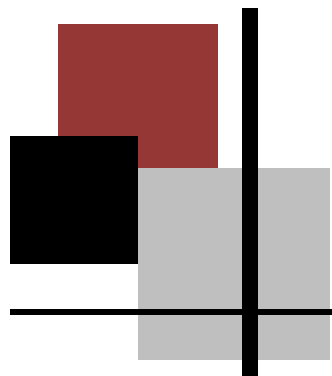
Fully committed and academically qualified

PROGRAMS

Academic, Athletic and Social

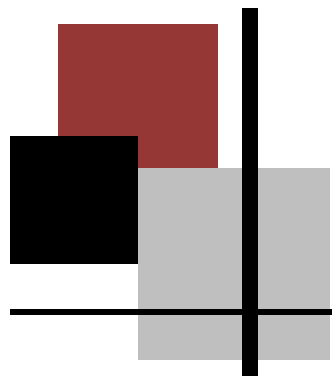
PROPERTIES

Used to provide an atmosphere conducive to fulfilling our objectives



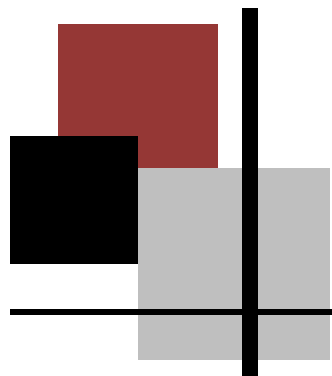
Distinctives

- ❖ K3 through 12th Grade Classes
- ❖ Biblically Integrated Curriculum
- ❖ 12 sh. Accredited College Credit
- ❖ Competitive WVSSAC Sports Program
- ❖ Safe and Secure Environment
- ❖ Senior Missions Trip Abroad



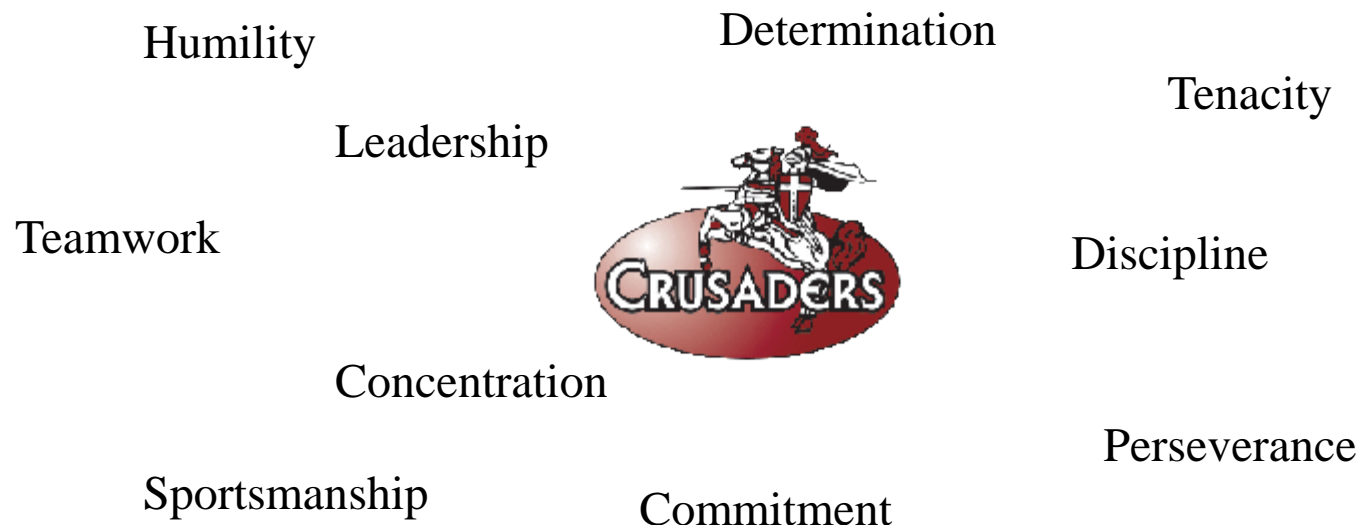
Accomplishments

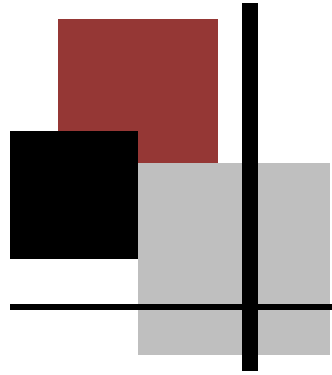
- ❖ 36% of graduates receive WV Promise Scholarships.
- ❖ 3 State Elite Eight Appearances in WVSSAC Girls Basketball
- ❖ 3 States Runner-ups in WVSSAC Girls Volleyball
- ❖ 1 State Elite Eight Appearance in WVSSAC Boys Basketball
- ❖ 3 State Championships in WVCAT Girls Volleyball
- ❖ Above National Averages on PLAN and EXPLORE Testing.



Sports & Education

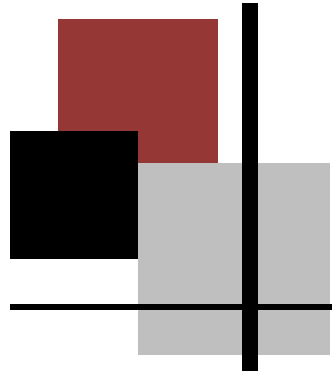
In the heat of competition, true character is tested and revealed! Athletics can be the classroom for developing Christ-like character.





Facilities Goals

- ✓ To construct new middle school/high school facilities with Library, Science Lab, Lecture Hall, Music Room, etc.
- ✓ To relocate the elementary classes to the current middle school/high school facilities and renovate.
- ✓ To construct new gymnasium.
- ✓ To improve oversight over combined facilities.
- ✓ To improve overall quality of education.



Facilities Needs

❖ Library

❖ Gymnasium

❖ Science Lab

❖ Weight Room

❖ Music & Art Rooms

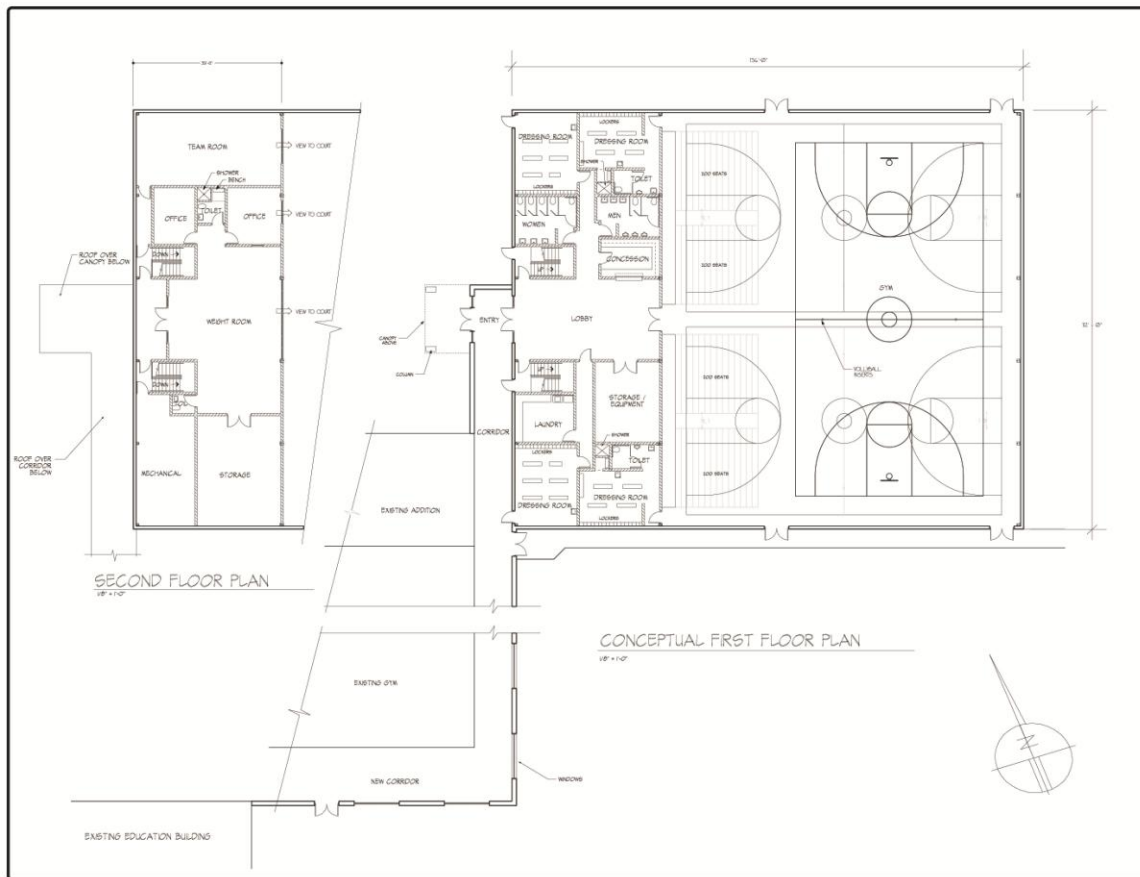
❖ Additional
Classrooms

❖ Kitchen/Concession
Facilities

❖ Additional Office
Space



Phase #1 Gymnasium Complex



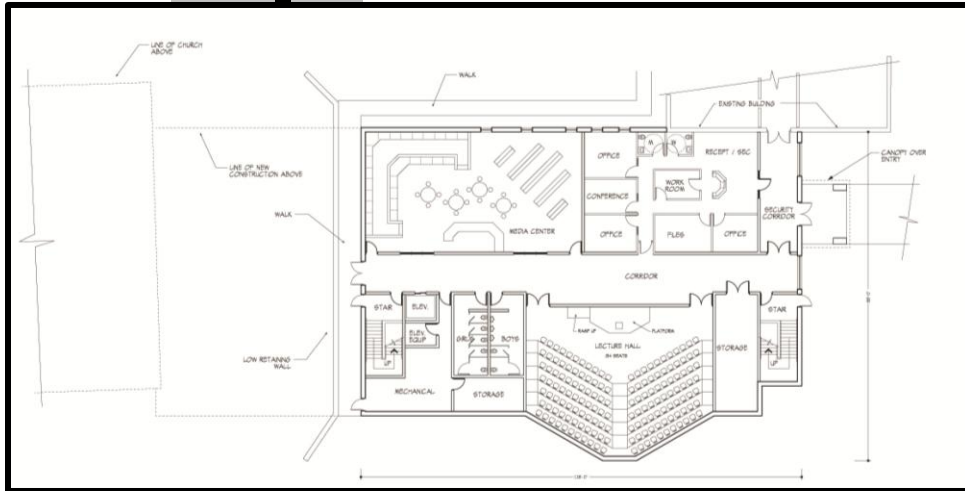
22,700 Ft.²

800 Person
Seating Capacity

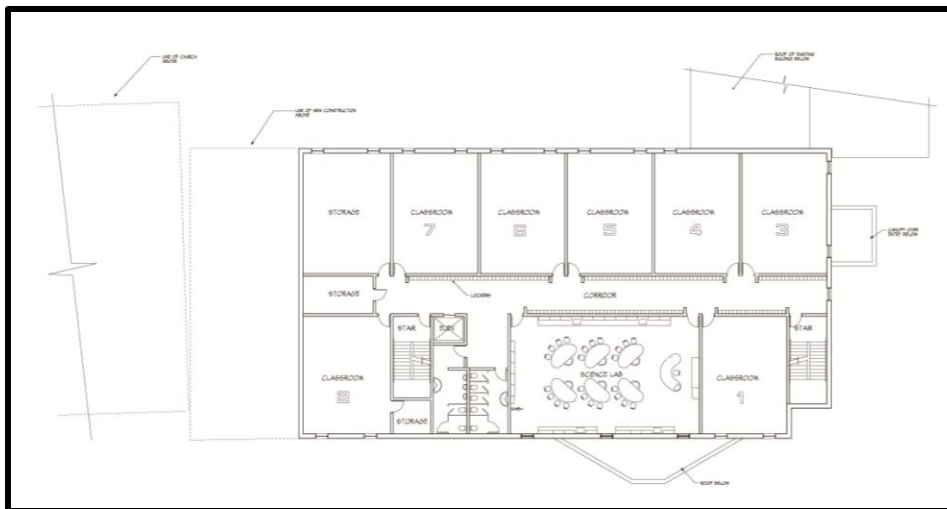
Probable Cost of
Construction
\$2,205,000.00

Phase #2

Academic Building



20,284 Ft.²



7 Classrooms &
Science Lab

Probable Cost of
Construction
\$3,752,540.00

